

Anchor point pipe clamps type 170 FL galvanised

Field of application

- Thermally decoupled attachment of chilled water pipes
- Complete anchor point pipe clamp for chilled water pipes
- For form-locking attachments taking up axial pipe forces
- For indoor use
- In particular for large nominal sizes

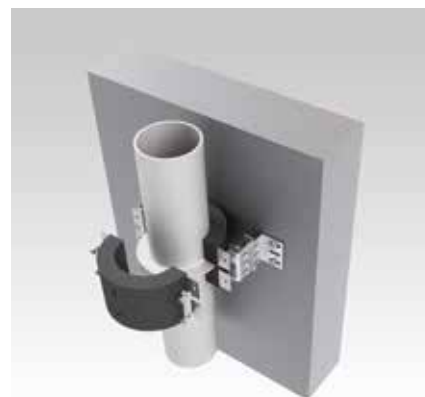
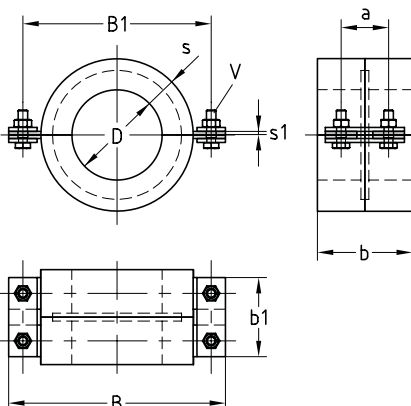
Advantages

- Direct between pipe clamp and cold pipe: decreased heat flux between pipe and environment
- Low thermal transfer with the insulation shells and internal clamp bracket used
- Simplified integration in sectional pipe insulation
- Specially suitable for attachments of steel pipelines according to DIN EN 10022



Features

Material insulation shell	Polyurethane, black
Effective density	250 kg/m³
Thermal conductivity	$\lambda = 0.045 \text{ W/mK}$
Fire classification (acc. to DIN 4102)	B2
Temperature range	-45 °C to +105 °C
Water vapour diffusion resistance	$\mu = 2,500$
Compression strength	4.3 N/mm² at 23 °C
Material clamp/pressure ring	S235JR



Nominal size pipe outer diameter		Insulation thickness s [mm]	Max. recommended load axial [N]	Max. recommended load radial [N]	Part no.	Sales unit	Pack unit	Dimensions [mm]						
[inch]	[mm]							s1	B	B1	b	b1	a	V
2	60.3	30	1,000	1,440	153065	1	pieces	4	203	173	100	90	50	M10
2½	76.1		2,500	3,600	150707									
3	88.9		3,000	4,300	150708				211	181				
4	114.3	40	4,000	6,900	150709				274	238	120	100	60	M12
	133.0		4,500	7,700	167131				300	264				
5	139.7			8,100	150710									
6	168.3	60	6,000	9,700	152055				328	288				M16
8	219.1		9,000	23,000	159107				439	399	200	140	100	
	273.0		12,000	28,000	156831				493	453				
	323.9		15,000	32,800	165046				544	504				
	355.6		17,000	36,000	160913				576	536				

PU-Sealer 310 ml cartridge

Part no.	Sales unit	Pack unit
122470	12	pieces

