

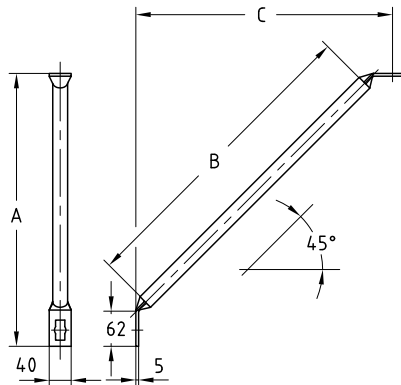
MPR-Diagonal struts type S galvanised

Field of application

- Supporting strut for reinforcement of corner joints in structures made of MPR-Support channels and MPR-Connection lock type S
- For indoor use

Advantages

- Easily connected with the MPR-Support channels due to installation with the MPR-Connection lock type S
- Ribbed design of the strut for increased bending and buckling strength
- Various lengths available for different on-site installation conditions



Length [mm]	Part no.	Sales unit	Pack unit	Dimensions [mm]		
				A	B	C
300	163519	1	pieces	308	300	279
400	163520			379	400	350
500	163521			448	500	419
600	163522			520	600	491

MPR-Adapter disc type S galvanised

Field of application

- Attachment of MPR-system components type S when making a through-fitting or direct attachment to the structure e.g. with anchor plugs

Advantages

- Three versions available
- Safe due to form lock in openings of MPR-system components type S
- Galvanised version for use in dry interiors



For thread	Part no.	Sales unit	Pack unit
M8	155368	50	pieces
M10	155369		
M12	155370		